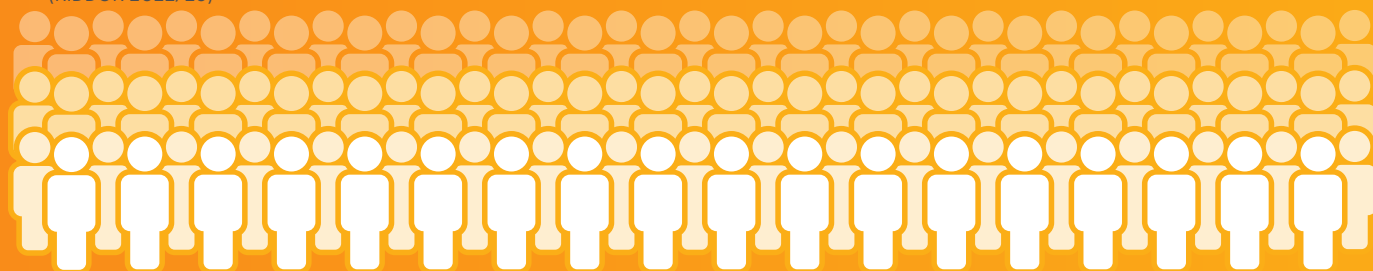


# HSE WORKPLACE FATALITY FIGURES 2022/23

The Health & Safety Executive's  
(HSE) annual workplace  
fatalities statistics for 2022/23

# 135 workers killed

(RIDDOR 2022/23)



**↑ 12**

A increase of 12 compared to 2021/22

## CAUSES OF FATAL INJURIES:

**40**  
FALLS FROM  
HEIGHT

**20**

STRUCK BY A  
MOVING VEHICLE



**29**

STRUCK BY  
A MOVING  
OBJECT

**9**



CONTACT  
WITH MOVING  
MACHINERY

TRAPPED BY  
SOMETHING  
COLLAPSING/  
OVERTURNING

**12**

## FATAL INJURIES BY INDUSTRY:



**45**

CONSTRUCTION

WHOLESALE,  
RETAIL, MOTOR  
REPAIR;  
ACCOMMODATION  
AND FOOD



**15**

**21**

AGRICULTURE,  
FORESTRY  
AND FISHING

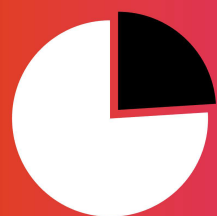
**15**

MANUFACTURING



**15**

TRANSPORT  
AND  
STORAGE



**22%**

The risks to older workers (aged 60 or over) continues to be highlighted with 30 of the total fatal injuries, despite only making up around 11% of the workforce.



**68** MEMBERS  
OF THE  
PUBLIC

KILLED DUE TO WORK-  
RELATED ACTIVITIES

\*Excludes deaths due to work-related accidents to 'patients and service users' in the healthcare and adult social care sectors in England reportable under RIDDOR

"While these figures show Great Britain is one of the safest countries in the world to work, safety must continue to be at the top of everyone's agenda. Our mission is to protect people and places and we remain committed to maintaining safe workplaces and holding employers to account for their actions."

HSE's Chief Executive, Sarah Albon

For more information about how to implement dynamic risk assessments and other solutions to improve lone worker safety, contact us today.

Visit [peoplesafe.co.uk](https://peoplesafe.co.uk)