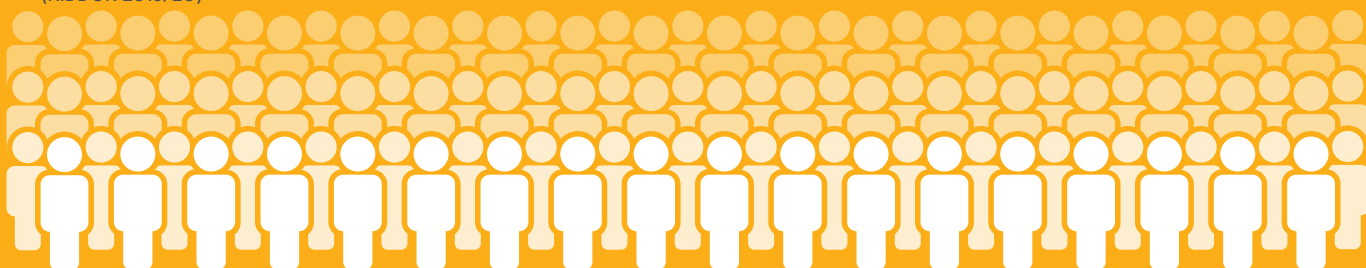


# HSE WORKPLACE FATALITY FIGURES 2019/20

The Health & Safety Executive's (HSE) annual workplace fatalities statistics for 2019/20 revealed a record low for the number of people that have died at work.

## 111 workers killed

(RIDDOR 2019/20)



38

The fall of 38 deaths from the previous year is likely to have been accentuated by the impact of COVID-19

### CAUSES OF FATAL INJURIES:

**29**  
FALLS FROM HEIGHT

**20** STRUCK BY A MOVING VEHICLE

**15** TRAPPED BY SOMETHING COLLAPSING/OVERTURNING

**18** STRUCK BY A MOVING OBJECT

**11** CONTACT WITH MOVING MACHINERY

### FATAL INJURIES BY INDUSTRY:

**40**  
CONSTRUCTION

**20**  
AGRICULTURE, FORESTRY AND FISHING

**15**  
MANUFACTURING

**11**  
TRANSPORT AND STORAGE

**27%**

The risks to older workers (aged 60 or over) continues to be highlighted with 27% of the total fatal injuries, despite only making up around 10% of the workforce.



**92** MEMBERS OF THE PUBLIC

KILLED DUE TO WORK-RELATED ACTIVITIES

\*excluding those that died in Local Authority enforced workplaces

“No one should be hurt or killed by the work they do[...] Every workplace fatality is a tragedy and while we are encouraged by this improvement, today's statistics is a reminder that we cannot become complacent as we look to continue to work together to make Great Britain an even safer place to live and work.”

HSE's chief executive, Sarah Albon

For more information about how to implement dynamic risk assessments and other solutions to improve lone worker safety, contact us today.

Visit [peoplesafe.co.uk](https://www.peoplesafe.co.uk)